

Spark social enterprise

Introductions



Social Enterprise ecosystem

Entrepreneurs



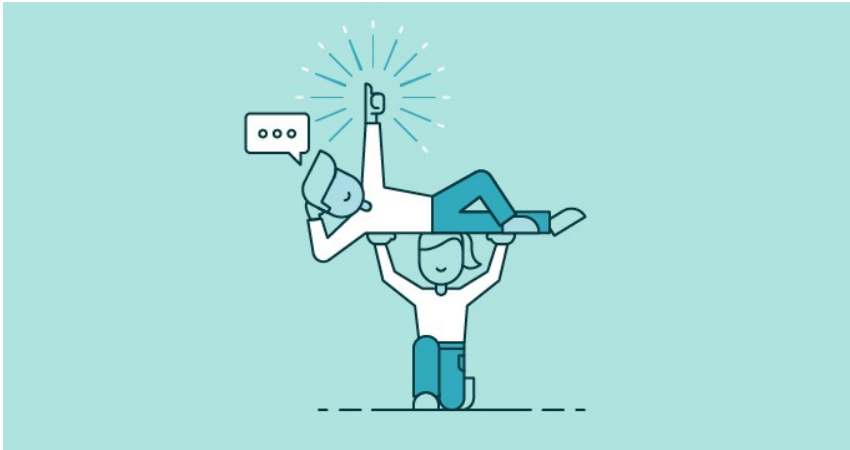
Funders



Policy makers



Support organisations



Entrepreneurs

Social Business Incubator



- **What's your differentiated offering?**
- **How will you get your first 100 customers?**
- **Which growth options will you prioritise?**
- **How will you develop a sustainable profitable model?**
- **How will you measure and maximise your impact?**

Funders



- **How to maximise both social and financial impact of investments?**
- **How to maximise social impact of portfolio companies?**

Policymakers



- **Strengthen the regulatory framework**
- **Differential Financial/Tax incentives for social enterprises**
- **Public Purchasing**
- **Talent development and education**

Support organisations



- **Which tools to offer?**
- **Access to**
 - **Knowledge and best practice?**
 - **Talent recruitment**
 - **Funding**
 - **Market**

